



**Embedded Automation, Inc.**  
Suite #104, 7485 – 130<sup>th</sup> Street  
Surrey, BC V3W 1H8  
Phone: (604) 596-4999  
Fax: (604) 596-4933  
[www.EmbeddedAutomation.com](http://www.EmbeddedAutomation.com)

---

# **Control** Add-in for Windows Home Server

---

## Installation Guide

## Table of Contents

<b>TABLE OF CONTENTS .....</b>	<b>2</b>
<b>INTRODUCTION.....</b>	<b>3</b>
<b>INSTALLATION.....</b>	<b>3</b>
<i>Upgrading mControl.....</i>	<i>3</i>
<i>mControl Trial Version.....</i>	<i>4</i>
<i>Installing mControl.....</i>	<i>4</i>
Download and Unzip the Latest Version of mControl.....	4
Copy mControl to Windows Home Server .....	5
Use the Windows Home Server Add-in Manager to Install mControl .....	6
<i>Activating mControl .....</i>	<i>7</i>
mControl License from a Purchased CD.....	7
mControl License from an Online Purchase.....	7
Activating the mControl License .....	8
<b>MCONTROL ON WINDOWS HOME SERVER.....</b>	<b>10</b>
<i>Performing mControl Administrative Functions .....</i>	<i>10</i>
<i>Accessing mControl Locally .....</i>	<i>11</i>
<i>Accessing mControl Remotely .....</i>	<i>11</i>
Authenticated Access.....	12
<b>SUPPORT .....</b>	<b>13</b>
<b>DIAGNOSTICS.....</b>	<b>13</b>
<b>CONTACT US .....</b>	<b>13</b>

## Introduction

This purpose of this document is to provide information on the mControl Add-in for Windows Home Server. For more information on mControl, please visit <http://www.EmbeddedAutomation.com>.

## Installation

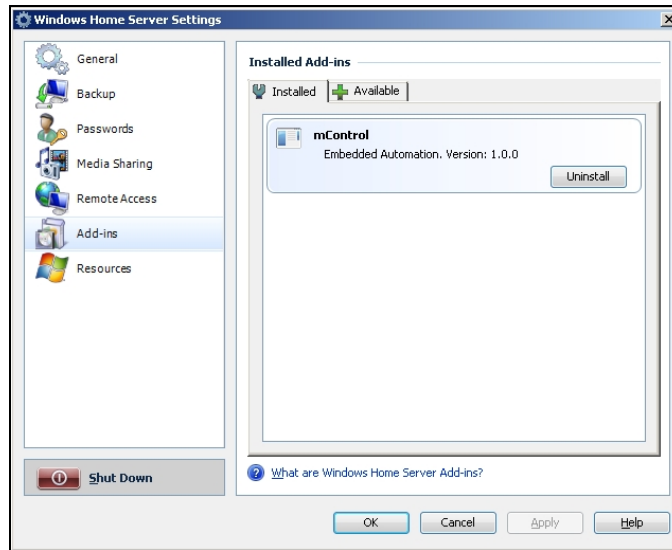
The mControl Add-in for Windows Home Server is meant strictly for use installing mControl on a Windows Home Server product. To install mControl on other platforms, please use mControl v2 (Home Edition).

If you are installing mControl for the first time, skip directly to the “Download the Latest Version of mControl” step.

### Upgrading mControl

Whether you are using a trial version of mControl or a purchased license of mControl, you can upgrade to a more recent version of mControl.

If you are upgrading mControl to a more recent version, please uninstall the previous version. To uninstall a previous version, use the Windows Home Server console's Settings button to manage Add-ins and then select the “Installed” tab. Select mControl and press the “Uninstall” button to uninstall the previous version.



This uninstall process will not remove any of you existing information – all zone, device, adapter and license information will be kept for subsequent versions.

## mControl Trial Version

The mControl Add-in for Windows Home Server is provided for a 30-day trial from the Embedded Automation web site. A copy-protection mechanism manages this limitation. mControl will periodically show the number of days remaining in the trial when the “Zone View” screen is accessed. The trial version of mControl offers full software functionality for the duration of the trial.

Upon expiration, mControl will continue to operate as usual, however, automation commands will only be sent to the first defined device.

Any re-installation or tampering with system date and/or the mControl license will cause automatic expiration of the copy protection. Please contact Embedded Automation to extend your 30-day trial by emailing [support@embeddedautomation.com](mailto:support@embeddedautomation.com).

## Installing mControl

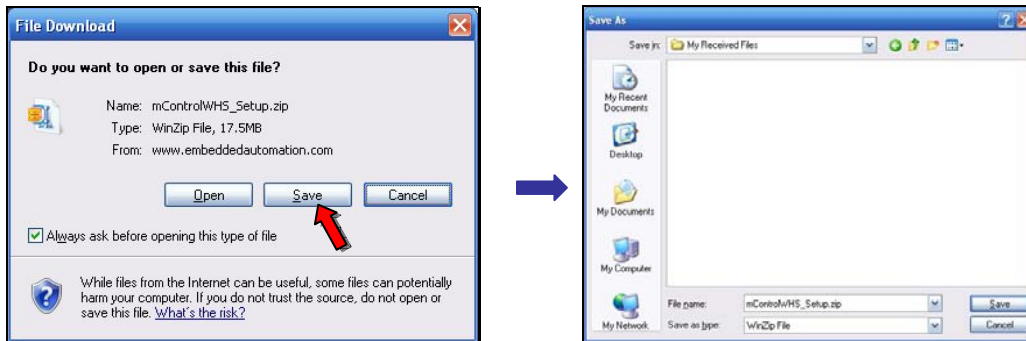
### Download and Unzip the Latest Version of mControl

As a customer (or as a trial user), the first thing that you will need to do is download the most recent mControl Add-in for Windows Home Server version from the Embedded Automation website (<http://www.EmbeddedAutomation.com>).

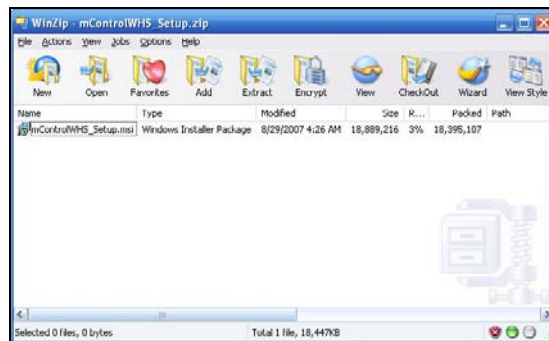


*It is highly recommended that you do not download the mControl Add-in for Windows Home Server directly from your Windows Home Server machine, but instead use a networked computer.*

Once the download has initiated, “Save” mControl to your hard drive – for example, in the “My Received Files” area.

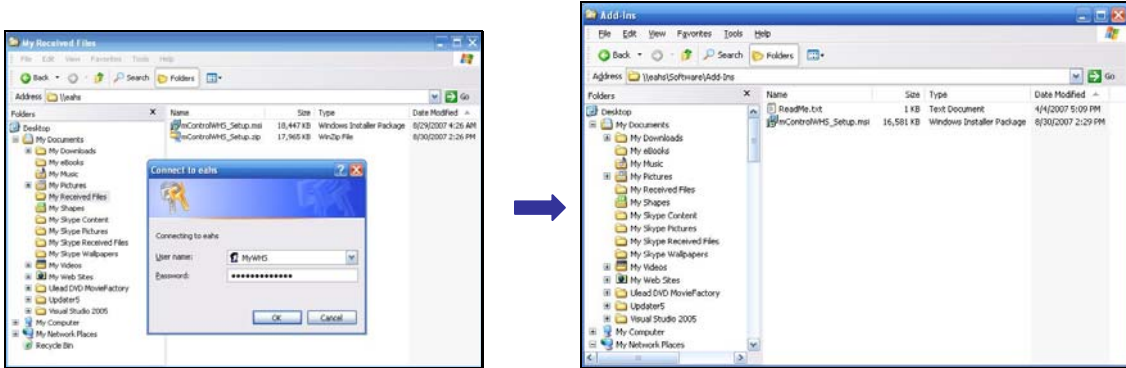


Once downloaded, unzip (extract) the mControl Add-in for Windows Home Server installer:

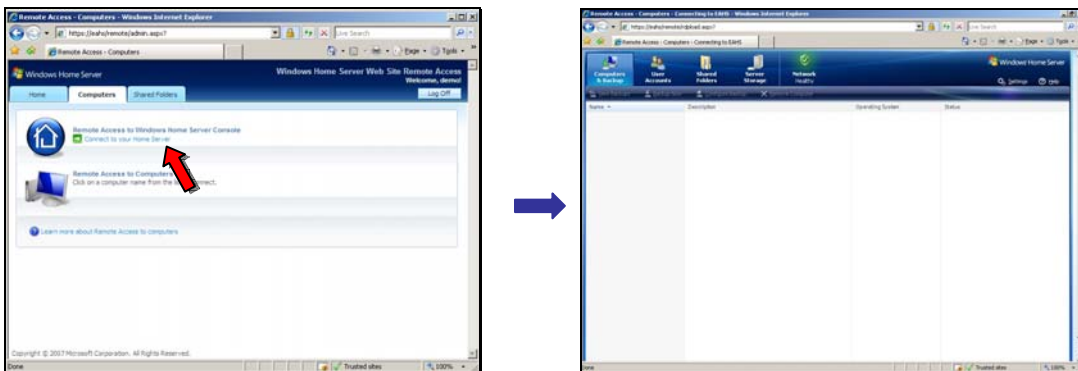
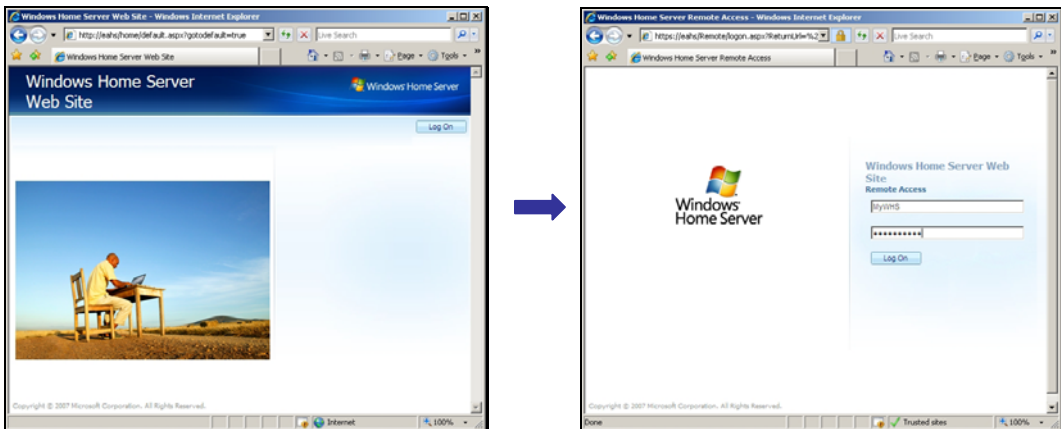


### Copy mControl to Windows Home Server

Logon to your Windows Home Server system and copy the mControl Add-in for Windows Home Server installer to the “\Software\Add-ins” shared directory.

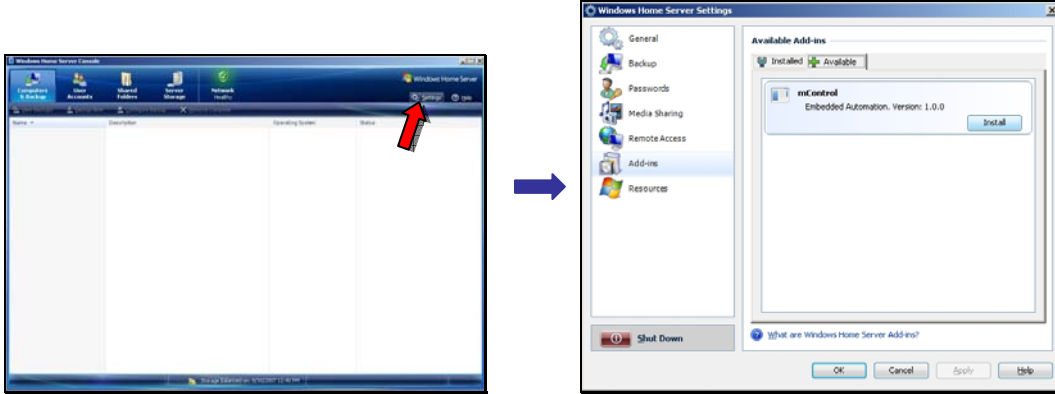


Using Internet Explorer, logon to your Windows Home Server console and access the Windows Home Server console using the Remote Access to Windows Home Server Console under the Computers tab.

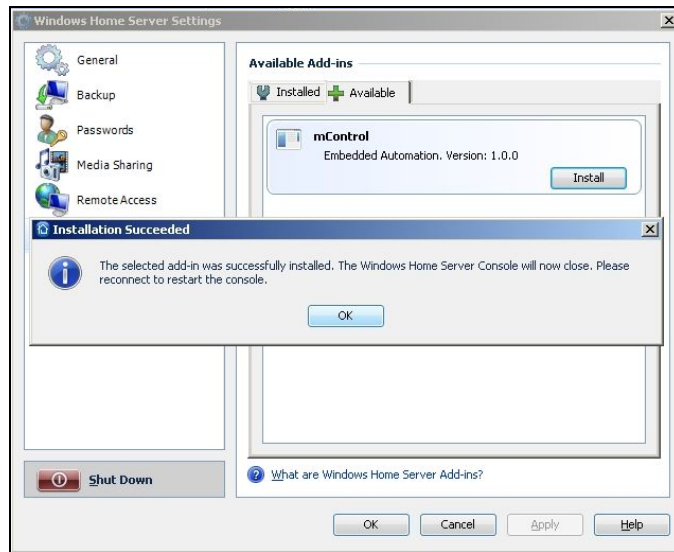


## Use the Windows Home Server Add-in Manager to Install mControl

Logon to your Windows Home Server system and copy the mControl Add-in for Windows Home Server. Use the Settings button to access the Add-in management functions of Windows Home Server.



Select mControl and press the “Install” button to install the mControl Add-in for Windows Home Server.



## Activating mControl

To activate your software, you will have to purchase a software license. Upon completing your purchase, you will be emailed a new license file, or for those retailers that provide a CD, the license file will be on your CD. This license file is not activated and you will have 10 days to activate this file.



***You will need to log in directly to your Windows Home Server system to copy the license file to the proper location.***

### mControl License from a Purchased CD

All you need to do is copy the license file from the CD:

- If you haven't already, download the latest version of mControl and install it.
- Copy **mServer.exe.lic.cpy** file located in the root directory of the CD and paste it to your desktop.
- Rename the **mServer.exe.lic.cpy** file located on your desktop to **mServer.exe.lic**.
- Copy the file which you have renamed to **mServer.exe.lic** to C:\inetpub\wwwroot\mControl\Server. Please ensure that you replace the trial license (also called **mServer.exe.lic**) with this purchased license.
- Once the purchased license is copied to the proper location, mControl must be restarted to use the new license. Reboot the computer or use the mControl tab on the WHS console to restart mControl.

### mControl License from an Online Purchase

If you have purchased mControl online, you will be emailed a license. This file is called **mServer.exe.lic**.

- If you haven't already, download the latest version of mControl and install it.
- Copy the **mServer.exe.lic** file and paste it to C:\inetpub\wwwroot\mControl\Server. Please ensure that you replace the trial license (also called **mServer.exe.lic**) with this purchased license.
- Once the purchased license is copied to the proper location, mControl must be restarted to use the new license. Reboot the computer or use the mControl tab on the WHS console to restart mControl.



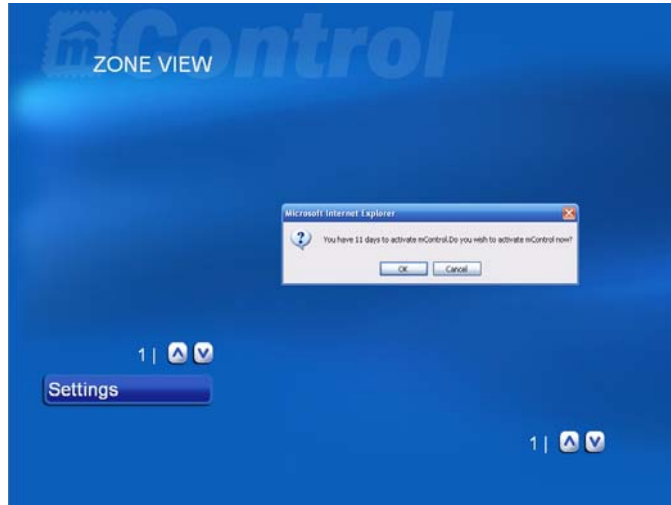
***For either a CD or Online purchase, please ensure that both the **mServer.exe.lic** (mControl License) and the **mServer.exe.lic.cpy** (mControl License back-up) exist in the C:\inetpub\wwwroot\mControl\Server directory.***

## Activating the mControl License

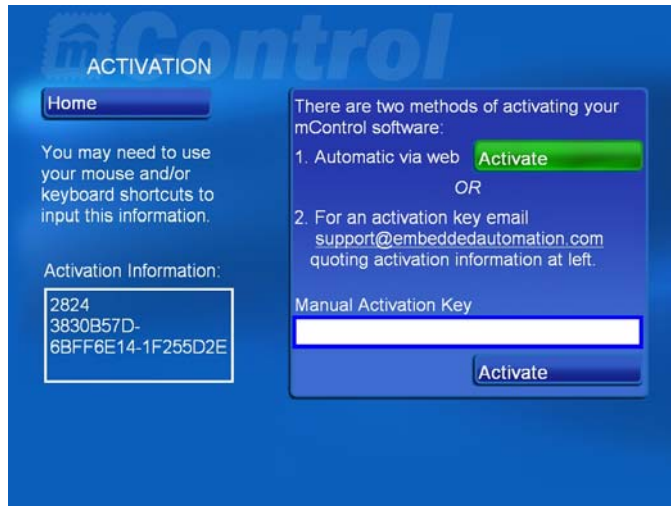


**Activation of the mControl license can be done from any machine on the same network as your Windows Home Server machine.**

Once mControl has been restarted, you will be prompted to activate your purchased license upon reentering mControl using either your Internet browser or Media Center interface. This activation process will remove all time restrictions from the software. You have 10 days to complete this activation.



Upon selecting to activate, you will be sent to the “Activation” page, where the mControl license is activated.



There are two ways to activate your mControl license:

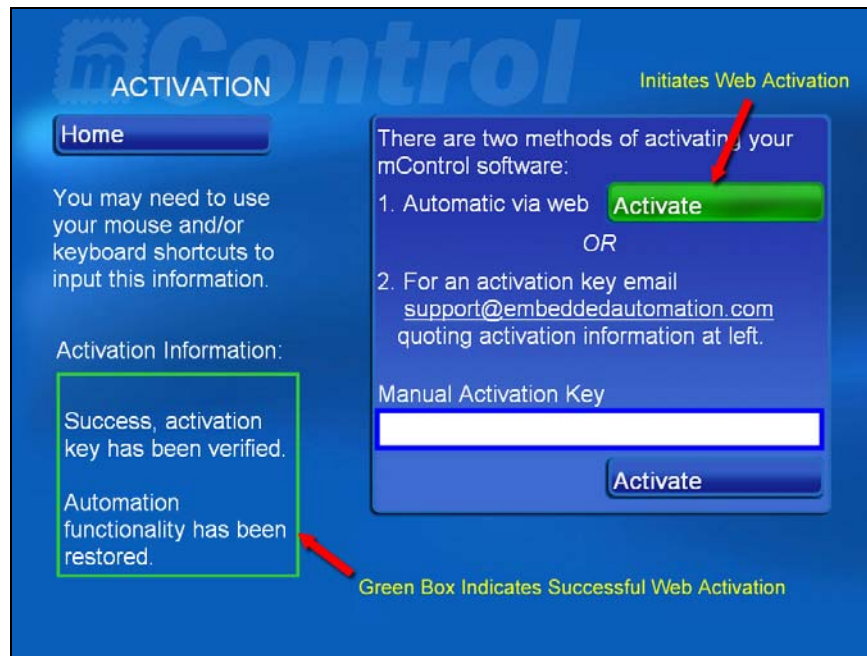
1. **Web Activation** – this is the recommended license activation procedure, as it is completed automatically. You will need a broadband connection.

To perform a web activation, press the “Activate” button beside the “Automatic via web” label. Once pressed, mControl will automatically download the special codes to activate the mControl license.



**Web activation may take several seconds – please be patient – DO NOT press the “Activate” button multiple times.**

Once successful, the box at the bottom left of the screen will turn green.

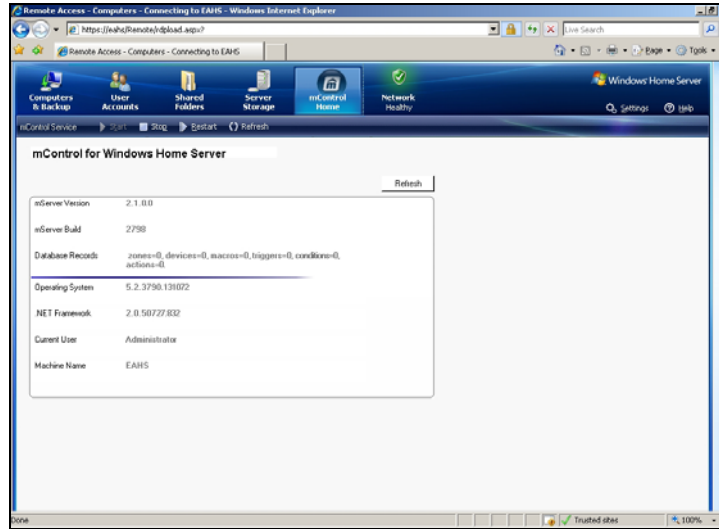


2. **Manual Activation** – this activation requires you to call or email mControl support. mControl support will provide a special code to activate your license. This special code will be entered in the field by the “Manual Activation Key” label.

## mControl on Windows Home Server

### Performing mControl Administrative Functions

The mControl Add-in for Windows Home Server provides a Windows Home Server console tab to manage mControl administrative functions.

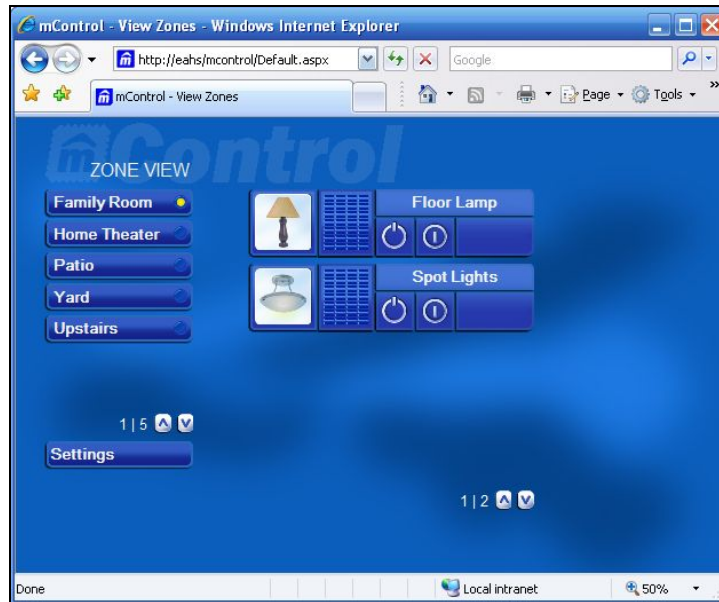


The mControl Add-in provides the following capabilities:

Function	Description
<i>Start</i>	Starts the mControl Automation Service
<i>Stop</i>	Stops the mControl Automation Service
<i>Restart</i>	Restarts the mControl Automation Service
<i>Refresh</i>	Refreshes the state of the mControl Automation Service and mControl Diagnostic Information
<i>Diagnostic Information</i>	Provides basic information on the mControl Automation Service

## Accessing mControl Locally

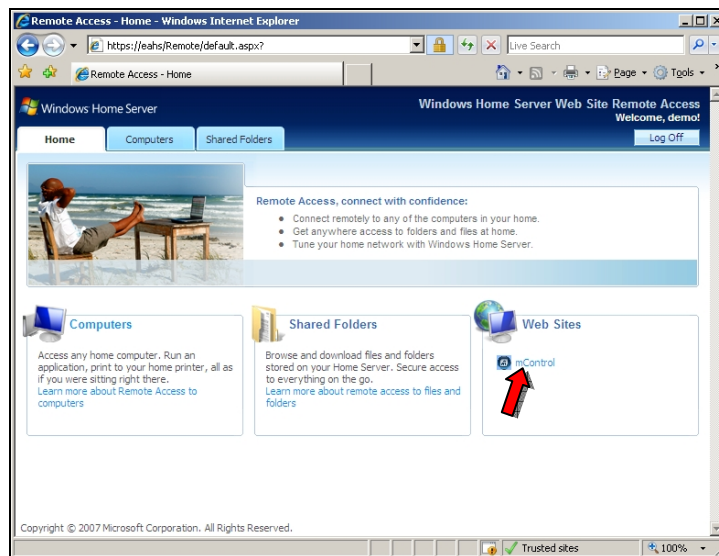
To access mControl locally within your network, open Internet Explorer and browse to [http://WHS\\_NAME/mcontrol/Default.aspx](http://WHS_NAME/mcontrol/Default.aspx), where WHS\_NAME is the name of your Windows Home Server computer.



## Accessing mControl Remotely

Windows Home Server allows remote access via an encrypted connection using a personal web address - [https://YOUR\\_NAME.HomeServer.com](https://YOUR_NAME.HomeServer.com), where YOUR\_NAME is your personal user account name.

Once logged in, a link to mControl is provided on the Home tab.



## Authenticated Access

It is highly recommended that you use authentication to disallow anonymous access to prevent unauthenticated users from accessing mControl.

- From your Windows Home Server machine, use Control Panel to access Internet Information Services, which provides serves the websites, including mControl.
- Select mControl on the navigation tree and right-click to access properties, select the "Directory Security" tab and then "Edit" the Anonymous Access and Authentication Control section.
- Uncheck "Anonymous Access" and select the authentication method best suited for your needs. For more information on authenticated access, see:  
[http://en.wikipedia.org/wiki/Internet\\_Information\\_Services#Authentication\\_mechanisms](http://en.wikipedia.org/wiki/Internet_Information_Services#Authentication_mechanisms)

## Support

### Diagnostics

Use [http://WHS\\_location/mControl/diagnostic.aspx](http://WHS_location/mControl/diagnostic.aspx) to generate a report of information related to your mControl installation.

### Contact Us

Send us an email to: [support@embeddedautomation.com](mailto:support@embeddedautomation.com) or go to the Support page at [www.embeddedautomation.com](http://www.embeddedautomation.com).

Participate in the forum: [www.embeddedautomation.com/forum](http://www.embeddedautomation.com/forum)