

# MCONTROL V3

## UPGRADE GUIDE

EMBEDDED AUTOMATION



## CONTENTS

Document Revisions .....	3
Purpose .....	4
Upgrade to mControl v3 Is Not Mandatory .....	4
Remove Older Version .....	5
Uninstall Older Version .....	5
Disable Older Version .....	5
Stop Older Version .....	5
Remove Any IIS Websites.....	6
Migrate mControl Database .....	7
Install mControl v3 .....	7
Stop mControl .....	7
Copy Database From Older Version to mControl v3 .....	8
Configure Driver Settings .....	8
Restart mControl v3.....	8
Purchase mControl v3 .....	9
mControl v3 Modules .....	9
Discount Coupon for Users of Older Versions of mControl.....	9
Frequently Asked Questions .....	10
Why didn't you just make a v2.2? .....	10
Do I need to upgrade? .....	10
Is mControl v2.1 dead? .....	10
If I upgrade, what happens to my mControl v2 license? .....	10
Why Should I upgrade to mControl v3? .....	11

## DOCUMENT REVISIONS

Revision	Date	Description
V1.00	September 16, 2011	Initial public release

## PURPOSE

The purpose of this document is to document the upgrade process from an older version of mControl to mControl v3. The following older versions are valid for this migration:

- mControl v1.1 and higher
- All versions of mControl v2

The general migration/upgrade process is the following:

- Uninstall or disable the older version
- Migrate the older version's database to mControl v3
- Purchase mControl v3 using discount provided to all users of older versions of mControl

## UPGRADE TO MCONTROL V3 IS NOT MANDATORY

Please note, as a user of an older version of mControl, there is no obligation to upgrade to mControl v3.

- Embedded Automation plans to continue to sell and support mControl v2.1
- Embedded Automation will have minor bug fix and driver releases for mControl v2.1, but does not anticipate major features to be added
- Embedded Automation will provide at least a 6 month notice for mControl v2.1 product end-of-life, at which point Embedded Automation will no longer sell or support mControl v2.1
- At end-of-life, users can indefinitely continue to use mControl v2, but no support will be provided

## REMOVE OLDER VERSION

First, you must either:

## UNINSTALL OLDER VERSION

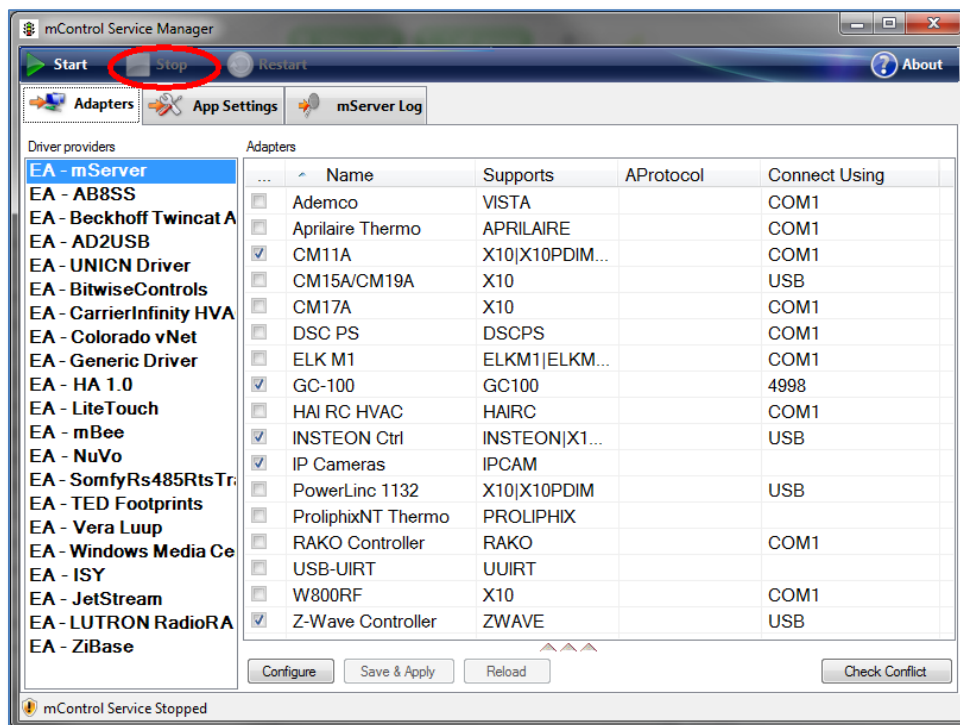
[Recommended] Uninstall your older version of mControl. The process of uninstalling your older version will leave your license and mControl database intact. DO NOT DELETE ANY FOLDERS or your license and mControl v3 database will be lost.

## DISABLE OLDER VERSION

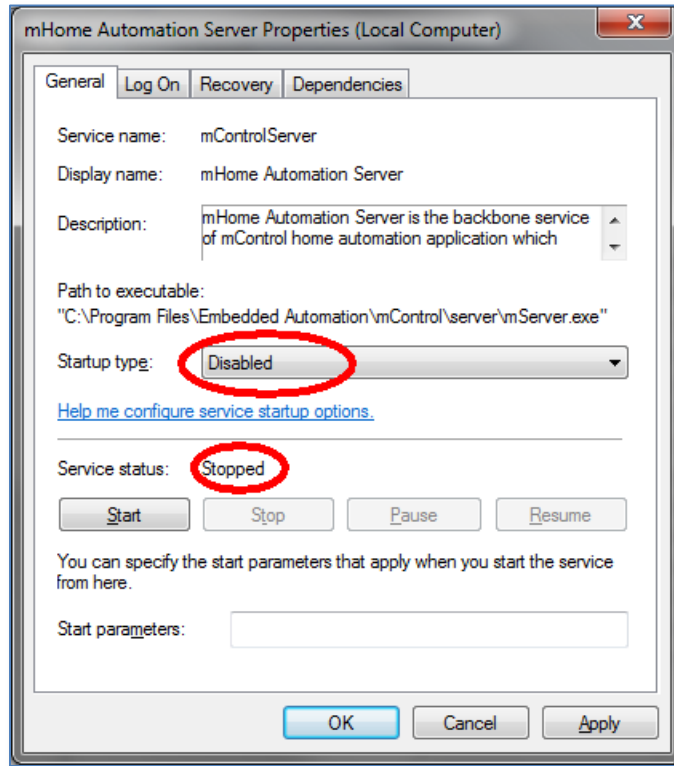
Since mControl v3 and older versions can be installed on the same machine simultaneously, configuration must be done to ensure that they do not conflict.

## STOP OLDER VERSION

Stop the Automation Service from your older version of mControl, as it will conflict with mControl v3's Automation Service. To do this, use the older version of mControl's Service Manager to stop the service:



To ensure permanent stoppage, you may consider using the Windows Services Manager to manually stop and disable the mHome Automation Service for the older version of mControl:



---

## REMOVE ANY IIS WEBSITES

If you are using IIS with the older version of mControl, it is recommended that you delete the associated website.

## MIGRATE MCONTROL DATABASE

mControl v3 can automatically upgrade your database from an older version to the mControl v3 format once it is copied to the mControl v3 folder.

Please note, once this conversion has happened, the updated mControl database CAN NOT be used with the older version of mControl. It is very important to keep a back of the database from your older version of mControl.

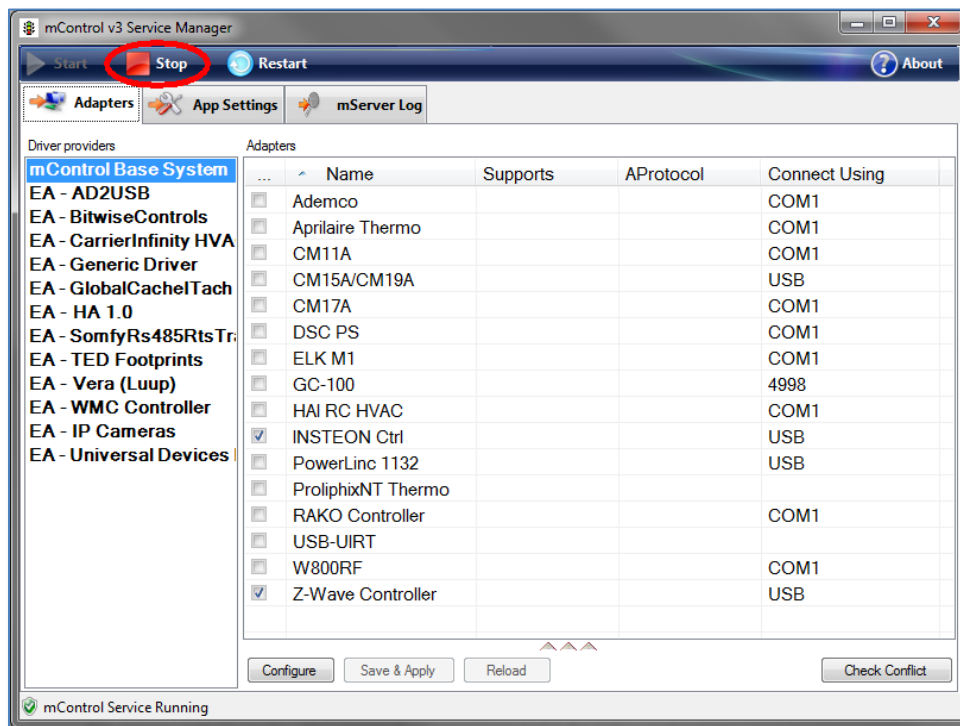
## INSTALL MCONTROL V3

You must first install mControl v3. mControl v3 is available from the mControl v3 product page on the Embedded Automation website.

Use the [mControl v3 – Quick Start Guide](#) to manage the install of mControl v3.

## STOP MCONTROL

Use mControl v3's Service Manager to stop mControl to ensure that the database copying is done without conflict.



## COPY DATABASE FROM OLDER VERSION TO MCONTROL V3

You must copy the mControl database, called `mHome.mdb` from your older version of mControl to mControl v3. You must have administrative rights to perform this action.

The `mHome.mdb` file for the older version of mControl is located in the following directory:

- If you are using a 32-bit operating system, the `mHome.mdb` file will be located in the `C:\Program Files\Embedded Automation\mControl\data` directory
- If you are using a 64-bit operating system, the `mHome.mdb` file will be located in the `C:\Program Files (x86)\Embedded Automation\mControl\data` directory
- If you are using Windows Home Server "Classic", the `mHome.mdb` file will be located in the `C:\Inetpub\wwwroot\mControl\data` directory

Copy the older `mHome.mdb` file to the following directory of mControl v3, overwriting the empty database provided as part of the install.

- If you are using a 32-bit operating system, the `mHome.mdb` file will be located in the `C:\Program Files\Embedded Automation\mControl v3\data` directory
- If you are using a 64-bit operating system, the `mHome.mdb` file will be located in the `C:\Program Files (x86)\Embedded Automation\mControl v3\data` directory

## CONFIGURE DRIVER SETTINGS

Because driver settings do not migrate, use the mControl v3 Service Manager to reconfigure the driver settings as per your older version of mControl.

## RESTART MCONTROL V3

Upon restart of mControl v3, the database from your older mControl version will be automatically converted to the mControl v3 format. The conversion process will be documented within the mControl v3 log file system.

If there are any issues during the conversion, please send the log file with the conversion information to Embedded Automation's mControl support team.

## PURCHASE MCONTROL V3

### MCONTROL V3 MODULES

Unlike older versions of mControl, mControl v3 is sold on the basis of modules. To duplicate the functionality of your older mControl use model, you may need to purchase one or more modules.

To determine which modules you require, determine which drivers/functionality you are using with your older version and then select the mControl v3 modules required.

Refer to the [mControl v3 – Quick Start Guide](#) to see a list of modules available for mControl v3. Please note, the mControl v3 – Base Module is an absolute requirement, all other modules are optional and should be selected based on your requirements.

### DISCOUNT COUPON FOR USERS OF OLDER VERSIONS OF MCONTROL

As an owner of an older version of mControl v3, you are entitled to a USD\$150 discount coupon towards the purchase of mControl v3. To receive this discount coupon send an email to the Embedded Automation Sales team at [sales@embeddedautomation.com](mailto:sales@embeddedautomation.com) with the following information:

1. Register on the Embedded Automation web store and send us your User Name and/or email address for the web store account – so we know who to give the discount to
2. Send us a copy of the license from your older mControl version, called `mServer.exe.lic`. The `mServer.exe.lic` file for the older version of mControl is located in the following directory:
  - o If you are using a 32-bit operating system, the mHome.mdb file will be located in the `C:\Program Files\Embedded Automation\mControl\server` directory
  - o If you are using a 64-bit operating system, the mHome.mdb file will be located in the `C:\Program Files (x86)\Embedded Automation\mControl\server` directory
  - o If you are using Windows Home Server “Classic”, the mHome.mdb file will be located in the `C:\Inetpub\wwwroot\mControl\server` directory

Once the Embedded Automation Sales team has validated your older license, Embedded Automation will:

1. Email you with validation information and inform you of your discount coupon.
2. Automatically register a USD\$150 discount coupon towards the purchase of the mControl v3 Base Module on your Embedded Automation web store account. The discount coupon will be available at the time of checkout.

## FREQUENTLY ASKED QUESTIONS

### WHY DIDN'T YOU JUST MAKE A V2.2?

To continue to provide new enhancements and features, we realized that we needed to improve the architecture, base technologies, scalability and programming interfaces.

We expect the mControl v3 foundation to be in place for the next few years. Ultimately, it allows us to provide a better product to our customer base.

### DO I NEED TO UPGRADE?

No - please note, as a user of an older version of mControl, there is no obligation to upgrade to mControl v3.

- Embedded Automation plans to continue to sell and support mControl v2.1
- Embedded Automation will have minor bug fix and driver releases for mControl v2.1, but does not anticipate major features to be added
- Embedded Automation will provide at least a 6 month notice for mControl v2.1 product end-of-life, at which point Embedded Automation will no longer sell or support mControl v2.1
- At end-of-life, users can indefinitely continue to use mControl v2, but no support will be provided

### IS MCONTROL V2.1 DEAD?

No, it's just that we will focus our major development work on the mControl v3 platform. And as we mentioned above:

- Embedded Automation will provide at least a 6 month notice for mControl v2.1 product end-of-life, at which point Embedded Automation will no longer sell or support mControl v2.1
- At end-of-life, users can indefinitely continue to use mControl v2, but no support will be provided

### IF I UPGRADE, WHAT HAPPENS TO MY MCONTROL V2 LICENSE?

Nothing, you can continue to use it if you'd like. While mControl v3 and older versions CANNOT run at the same time, they can co-exist on the same machine and can be used if the other is disabled.

You can even install mControl v3 on another machine and leave mControl v2 on your existing machine.

## WHY SHOULD I UPGRADE TO MCONTROL V3?

Short answer: more features, for the future and there's an incentive:

- There are some new features in mControl v3, which are not in older versions of mControl. For example: iPad/iPhone interface, mRemote and Module Maker, Data Logging and mChronicle, and others.
- We will continue to add major (and minor) features to mControl v3. We are only planning minor features for mControl v2.
- mControl v3 is Embedded Automation's platform for the future development and supports latest operating systems, technologies and therefore will migrate better to future platforms like Windows 8, new protocols, etc.

Lastly, we're providing an incentive, a \$150 discount, to move to the new platform.